



Somerset Road, London, W4 5DW

Guide Price £1,195,000

WHITMAN & CO.

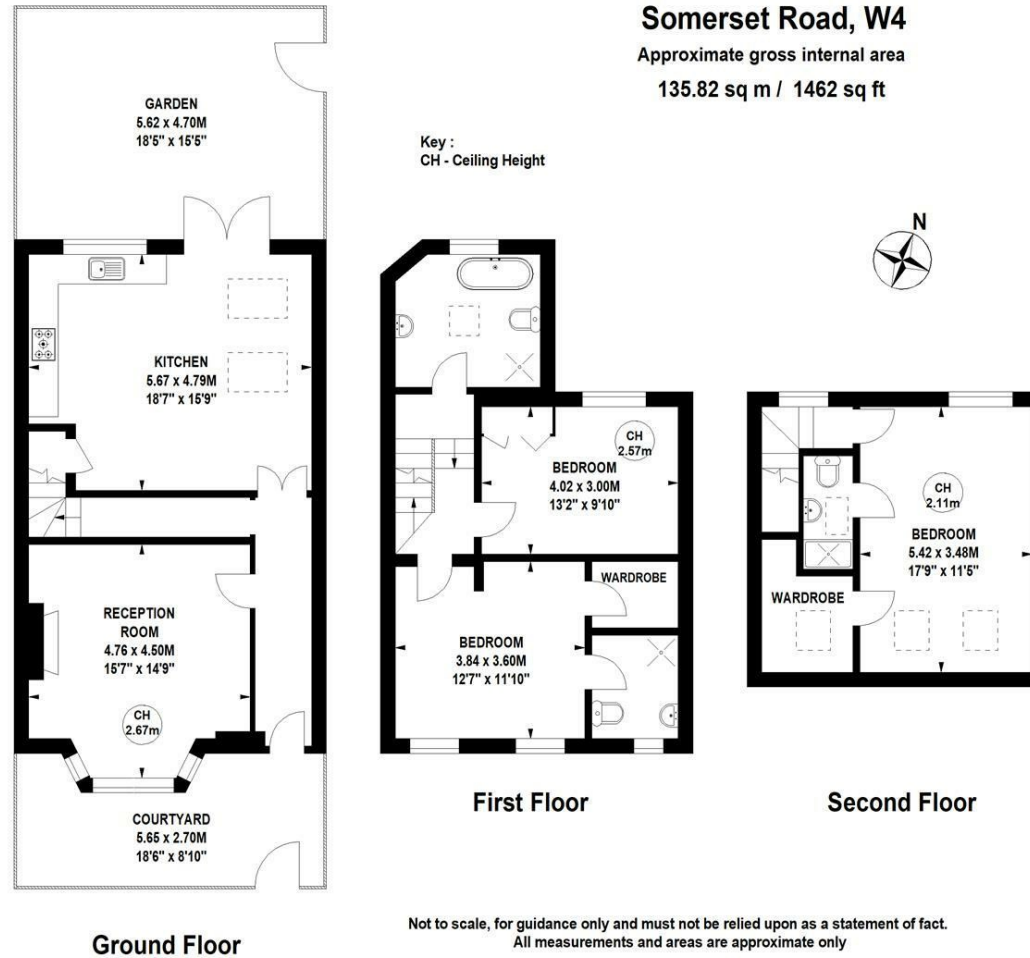
SALES · LETTINGS · COMMERCIAL

- End of terrace period property
- Private landscaped garden
- Fantastic transport links
- Presented in excellent order throughout
- Three bed/three bath
- No onward chain

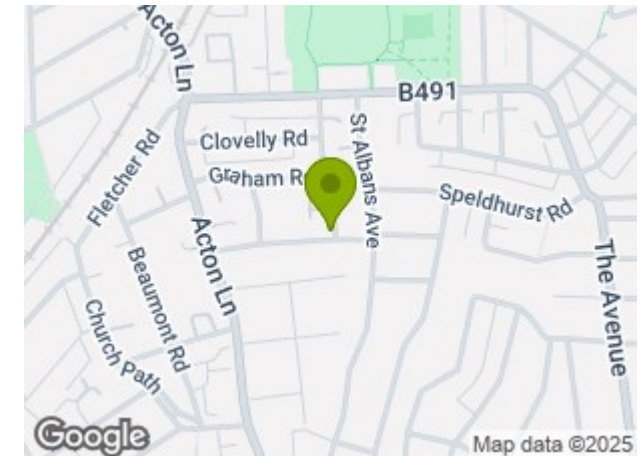
Tenure - Freehold
Local Authority - Ealing
Council Tax - Band E

THE PROPERTY

An immaculately presented three bedroom larger than average end of terrace family house ideally located in this popular tree-lined residential street. Having been kept in an impressive condition by the current owner, this property comprises a 17' master bedroom with walk-in wardrobe and ensuite, two further double bedrooms one with an ensuite and walk-in wardrobe, modern family bathroom, 15' reception room with bay window, open plan fitted kitchen and dining area opening onto a private landscaped garden. Situated in this sought after residential area offering close proximity to Turnham Green tube station and the extensive shopping facilities on Chiswick High Road. No onward chain.



SITUATION



5-7 Turnham Green Terrace, Chiswick, London, W4 1RG

Tel 020 8747 8800

E-mail sales@whitmanandco.com

Website www.whitmanandco.com